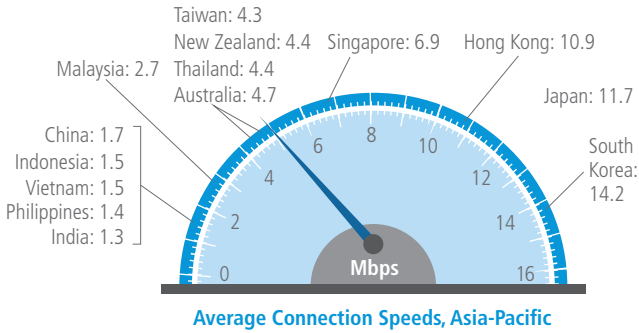


# The State of the Internet Report

ASIA-PACIFIC – FIRST QUARTER, 2013

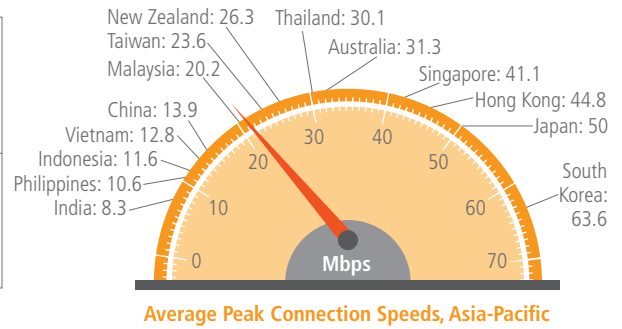
## INTERNET & BROADBAND ADOPTION

In the third quarter, the global average connection speed increased 4% to 3.1 Mbps, and the global average peak connection speed increased 9.2% to 18.4 Mbps. Across countries in Asia-Pacific, quarterly changes across both metrics were generally positive.



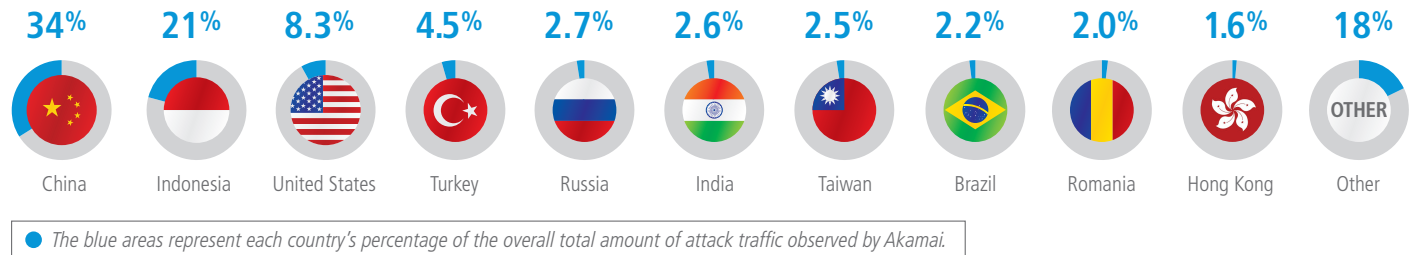
**3.1 Mbps**  
Global Average Connection Speed

**18.4 Mbps**  
Global Average Peak Connection Speed



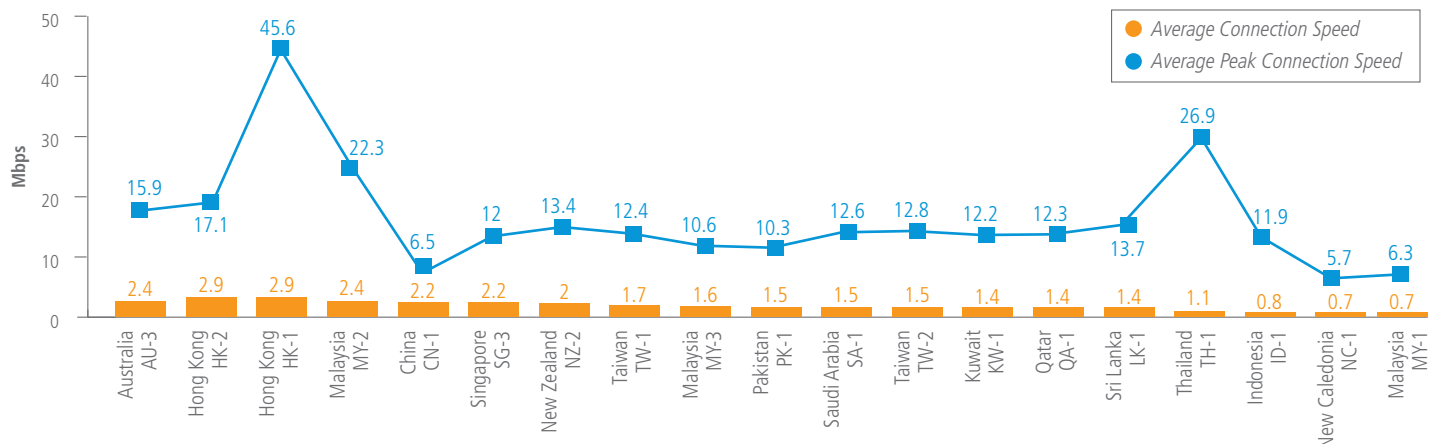
## SECURITY: ATTACK TRAFFIC

Just over 13% of observed attack traffic originated in North and South America, just under 19% originated in Europe, and nearly 68% originated in the Asia Pacific/Oceania region. Africa's contribution dropped as compared to prior quarters, as it was responsible for a mere half a percent.



## MOBILE CONNECTIVITY

Mobile providers HK-1 and HK-2 had the highest average connection speed, at 2.9 Mbps, while NC-1 and MY-1 had the lowest at 0.7 Mbps. Mobile provider HK-1 had the highest average peak connection speed at 45.6 Mbps, while NC-1 had the lowest at 5.7 Mbps.



NOTE: The average and average peak connection speeds presented above are based on end-user connections from those mobile networks to the Akamai Intelligent Platform, and are not necessarily representative of a single provider's full set of service offerings or capabilities.